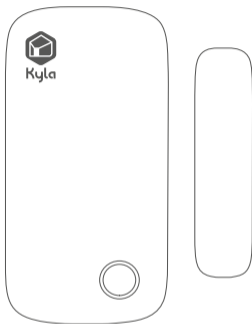




Kyla

User Guide



## Smart Door/ Window Sensor

---

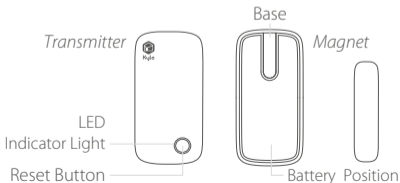
Thanks for using Aztech Kyla product  
If you need support or help,  
please visit [www.kyla.aztech.com](http://www.kyla.aztech.com)

## Packing List

- Door/Window Sensor
- Warranty Card
- Double Sided Tape
- CR2032 Battery
- User Guide

## Product Description

The Smart Door/Window Sensor can be installed on a door, window and any other open/close object. Working with Smart Zigbee Hub and Aztech Kyla App, it provides your home a security defense and creates scene with other devices.



## LED States

### LED Slowly Blinks Once per Second

Device is searching for network

### LED Blinks Once

Detection and alarm

### LED Blinks Once per 3 Seconds

Low battery, replace batteries  
as soon as possible

**Note:** The battery standby time is  
about 8-12 months

## Step 1:

Download Aztech Kyla App from  
Google Play/App Store



## Aztech Kyla App

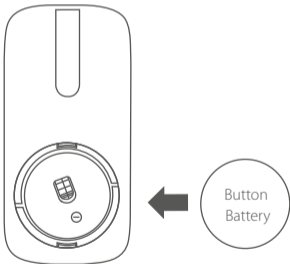


## Step 2:

Login to Aztech Kyla App, then add "Smart Door/Window Sensor" to device list to enable the device.

### Step 3:

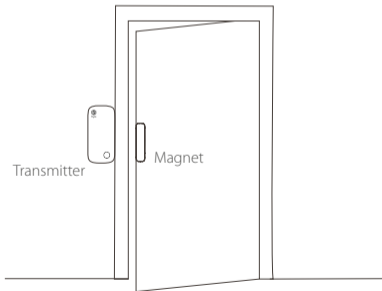
Open the transmitter base cover and insert the battery. The device will start up immediately.



## Step 4:

Install the transmitter on a door frame, the magnet on the door or window. The magnet should be installed closer to the right side of the transmitter.

Use double-sided tape to paste transmitter and magnet on the installation location.



## Restore Default Setting

Press and hold the Reset button until the green light goes off, which means the sensor is disconnected from the Hub. Press the button again (until green LED light slowly flashes), meaning the the sensor is ready to reconnect with the Hub.



# Technical Specifications

## Power Supply

CR2032 Battery x 1

## Material of Housing

PC and ABS

## Wireless Standard

IEEE 802.15.4

## Networking Mode

Zigbee HA

## Operating Temperature

-10 ~ 50°C

## Working Humidity

10% - 90% RH

## Transmitter Dimensions

61.5 x 30.3 x 11.7mm

## Magnet Dimensions

44.8 x 10.9 x 7.9mm

# Aztech

©2018 Aztech Technologies Pte Ltd.  
All rights reserved.