

Aztech

AEK3630

Temperature Controlled
Electric Kettle

USER MANUAL



PLEASE KEEP THIS USER MANUAL FOR FUTURE USE.



USER MANUAL CONTENTS

SAFETY INSTRUCTIONS.....	3
PACKAGE CONTENTS.....	5
APPLIANCE OVERVIEW.....	5
BEFORE USE.....	6
USING THE ELECTRIC KETTLE.....	6
KETTLE CARE AND CLEANING.....	9
TROUBLESHOOTING.....	10

SAFETY INSTRUCTIONS

NOTE: It is STRONGLY ADVISED to ensure that you have read all provided safety guides and operating instructions in this user manual first before proceeding.

- Should damages be found on the appliance, its power cord and/or its other components – do not use the appliance and immediately bring it to the Aztech Service Center for repair or replacement.
- Before use, please check if the power voltage of your Electric Kettle correctly corresponds to your home's power supply.
- Do not, in any kind of manner, disassemble, dismantle, and/or perform appliance repair on your own and/or replace its components using non-Aztech approved components and/or attachments.
- Do not use the appliance and/or its components for anything other than its intended purpose. The appliance is intended for household use only, commercial usage would void the warranty of the appliance.
- Do not use wet hands in inserting or removing its power adapter to prevent electrical shocks. It is recommended to thoroughly dry your hands first before every use.
- Ensure to ALWAYS position your Electric Kettle on a smooth, dry, and stable ground. Placing the appliance on unstable surfaces such as cushioned carpets and/or uneven surfaces may cause the appliance to lose its balance during operation.
- Do not position the appliance in a humid environment and/or in places exposed to multiple sources of heat such as stoves, refrigerators, or ovens. It is also important to keep it away from flammable/combustible materials such as electric burners, curtains and/or cloths especially during use.
- Always unplug the unit before cleaning, whenever filling it with water, and/or even after usage.

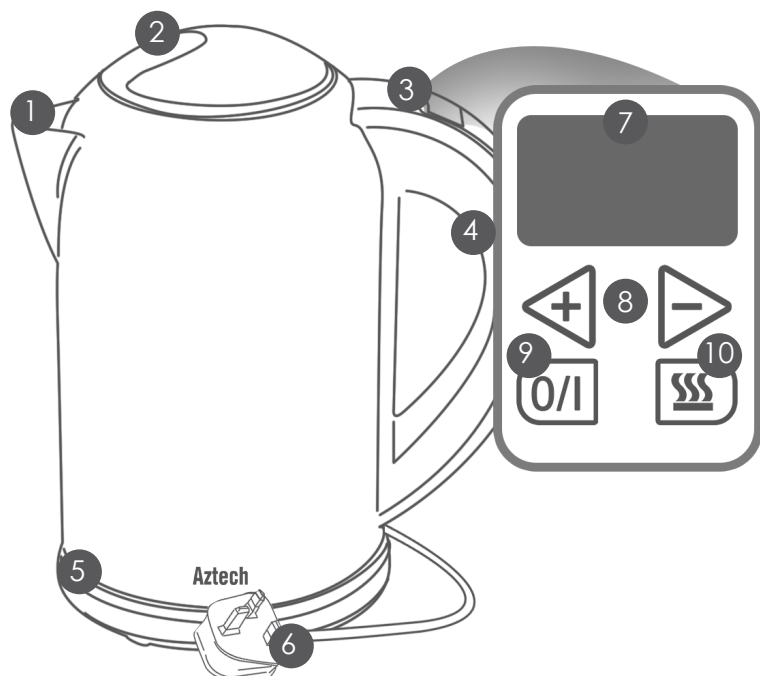
- Keep the appliance out of reach of children. If children are within the area during use, ensure to operate the appliance with extra care for safety purposes. Keep its power cord safely kept away and out of reach during use to avoid unwanted accidents.
- When filling the Electric Kettle with water, ensure that the water content does not exceed its spout. In addition, ensure that the water to be heated is sufficient enough for boiling without drying its contents.
- Ensure that the electric kettle's bottom and base are completely dry before use to avoid risks of electric shock.
- Before and during heating, ensure that the lid is properly closed. In addition, do not open its and/or even move the kettle during use.
- Always unplug the power adapter if you are done using your Electric Kettle and allow it to cool down before doing any cleaning, relocation, and/or appliance maintenance.
- When unplugging its power adapter, do not pull or tug its cord. Hold the power adapter firmly on its base when unplugging it from the power outlet. Also, ensure that its power cord is kept away from any source of heat and/or sharp edges that may cause external damage to the cord.
- During use, it is highly recommended to shorten the distance between the power outlet and gyal base to reduce and/or avoid hazards resulting from entanglement and/or tripping.
- Do not immerse or expose your Electric Kettle's base and/or its power cord to water or any kind of liquid substance.
- This product can only be used to heat water. Other soluble drinks (e.g. coffee, soup, milk, etc.) should not be heated in the kettle.
- When pouring boiling water, ensure to handle the kettle carefully.
- Your Aztech Electric Kettle is not intended for people with reduced physical, sensory or mental capabilities, and/or lack of experience or knowledge. Constant supervision (from a person responsible for their safety) should be provided if such individuals would be using, cleaning, or operating, the appliance.

PACKAGE CONTENTS

- AEK3630 Electric Kettle
- 360° Gyral Base
- Easy Start Guide
- User Manual
- Warranty Policy

APPLIANCE OVERVIEW

ELECTRIC KETTLE COMPONENTS



- | | |
|---------------------------|---|
| 1. Spout and Filter | 7. Control Panel LCD |
| 2. Lid Release Button | 8. Temperature Adjustment Buttons (+,-) |
| 3. Control Panel with LCD | 9. ON/OFF Button |
| 4. Handle | 10. Keep Warm Button |
| 5. 360° Gyral Base | |
| 6. Power Adapter | |

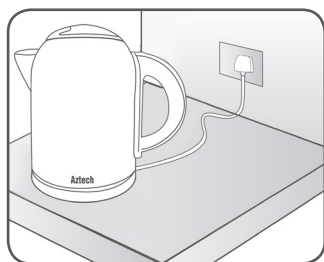
BEFORE USE

Before first use, fill the kettle with the right amount of water (just below spout), bring to boil then discard boiled water. Do this process TWICE. This will ensure that residues left from the manufacturing process are completely removed before using it for boiling water.

USING THE ELECTRIC KETTLE

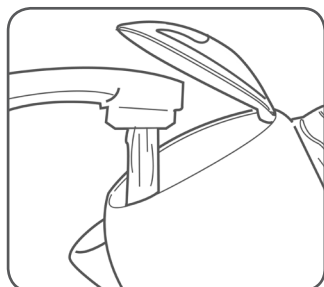
TIPS IN USING YOUR ELECTRIC KETTLE

- Before use, please check if the power voltage of your Electric Kettle correctly corresponds to your home's power supply.
- Ensure to position your Electric Kettle on a smooth, dry, and stable ground. Placing the appliance on unstable surfaces such as cushioned carpets and/or uneven surfaces may cause the appliance to lose its balance during operation.
- Do not position the appliance in a humid environment and/or in places exposed to multiple sources of heat such as stoves, refrigerators, or ovens. It is also important to keep it away from flammable/combustible materials such as electric burners, curtains and/or cloths especially during use.



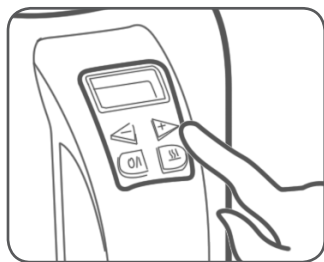
STEP 1: Position your Kettle

- a. Position the base on a smooth, flat and dry surface.
- b. The underside of the base is fitted with a cable storage feature. Unwind the length of the cord required to reach the power outlet and plug its power adapter to a power outlet.



STEP 2: Fill Kettle

- a. Lift the kettle from the base and press the lid release button to open the lid.
- b. Fill the kettle with cold water just below the spout.
- c. Close the kettle's lid and place the kettle back to its base. Ensure that the lid is securely closed.



OPTION A SEQUENCE



OPTION B SEQUENCE



NOTES:

- The LCD will display a blinking 100°C to indicate that the water is already boiling.
- Temperature adjustment is done in 5 increments/decrements (100, 95, 90..)

NOTE: The Keep Warm function will only work if the water inside the kettle is below 90°C.

OPTION A SEQUENCE



STEP 3: Select Function

BOIL WATER

You can do any of the provided methods below in heating your water:

- **Option A.** Press the ON/OFF (O/I) button, by default this will boil the water up to 100 °C.
- **Option B.** Press the + (LCD will display 100°C) or - (LCD will display 40°C) button, and adjust until the preferred boiling temperature is set, press ON/OFF to confirm.

During the boiling process, pressing the + or - button will reset the selected/targeted water temperature. However, please take note of the following :

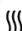
- **If the new temperature selected is HIGHER than the current water temperature**, the appliance would continue boiling the water.
- **If the selected temperature is LOWER than the current water temperature**, the appliance would stop heating the water.

KEEP HOT WATER WARM

You can use the Keep Warm button to heat up your hot water (up to 2 Hours) according to your preferred water heat.

NOTE: If the selected KEEP WARM temperature is LOWER than the current water temperature, the KEEP WARM feature will not work.

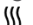
You can do any of the provided options below in keeping your water warm:

- **Option A.** Press the ON/OFF (O/I) button, press the + or - buttons until the preferred keep warm temperature is set then press the Keep Warm  button.


OPTION B SEQUENCE.



NOTE: The Keep Warm function will only work if the water inside the kettle is below 90°C.

- **Option B.** Press the + (LCD will display 100°C) or - (LCD will display 40°C) button and adjust until the preferred boiling temperature is set. Press the Keep Warm  button, then press the ON/OFF button to confirm.

ADDITIONAL NOTES:

- After using any of the provided options, check the LCD. It should show  beside the selected temperature to indicate that you are using the Keep Warm function.
- The Keep Warm function will not work if the selected temperature is lower than the water's current temperature.
- The Keep Warm function will only work for a maximum of 2 hours.

KETTLE CARE AND CLEANING

NOTE: Do not immerse the kettle, its power cord, including its base in water and/or in any kind of liquid substance.

CLEANING THE KETTLE

1. Please unplug the power adapter and allow the kettle to cool down.
2. Using a damp cloth, wipe off its external surface to remove dirt and/or other particles. Please do not abrasive products since these may damage the appliance's surface.

REMOVING LIMESCALES

Limescale removal is essential to help keep your Electric Kettle maintain its heating performance. This can be done through the following steps below:

1. Pour sufficient amount of vinegar into the Electric Kettle. Ensure that the limescaled areas are soaked in vinegar. Let the limescale get soaked in the vinegar for 15 minutes.
2. Drain the vinegar then rinse the inner kettle thoroughly for five (5) times using clean water.
3. Add in 0.5L water to the pot, allow it to boil, then add 25g of citric acid. Allow it to soak the limescale for 15 minutes before draining it again.
4. Using clean water, rinse the inner kettle thoroughly again for five (5) times

TROUBLESHOOTING

PROBLEM	POSSIBLE REASON
1 The Electric Kettle turns OFF automatically even before boiling	<p>Limescale buildup. Remove limescales as needed. Please refer to the Kettle Care and Cleaning section in page 9.</p> <p>There is an inadequate amount of water in the kettle. This activates the dry-boil protection of your device. Add more water into the kettle, and wait for two (2) minutes for the protection feature to reset.</p>
2 The Electric Kettle does not work	<p>Check if its power adapter is plugged into a power outlet.</p> <p>If the dry-boil protection is activated, the appliance will stop any operation.</p>
3 The boiled water has a peculiar smell	<p>For first time use, this is normal.</p> <p>Boil a mixture of two tablespoons of Baking Soda with water. Allow it to cool down and rinse as necessary.</p>
4 The boiled water seems dirty	<p>Limescale buildup. This kind of water is caused by calcium carbonate and magnesium carbonate. Please refer to the Kettle Care and Cleaning section in page 9.</p>



Aztech