

Device Pairing - HomePlug Utility (HL110EW)

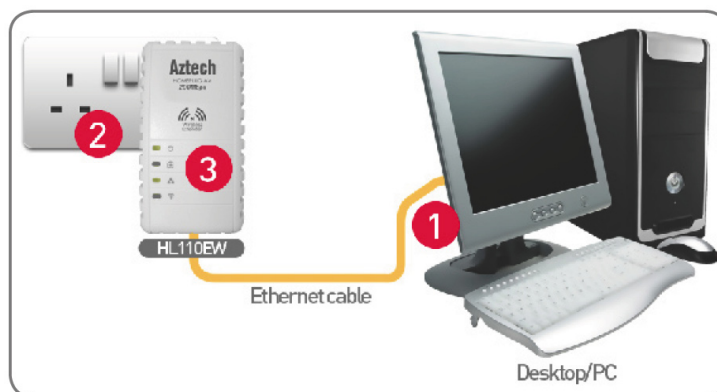
ALL AZTECH HOMEPLUGS ARE PLUG AND PLAY READY.

All Aztech HomePlugs are preconfigured with a common Private Network Name. Adding new HomePlug AV devices to an existing network with the default Private Network Name is as easy as plugging the device into the power outlet.

Setup Before Use :

For the HomePlug Utility to change the properties of your HL110EW, ensure to follow the setup below.

1. Connect your HL110EW to your Desktop/PC using an Ethernet cable.
2. Plug your HL110EW to a power outlet.
3. Ensure that the Power LED and Ethernet LED of your HL110EW is ON.



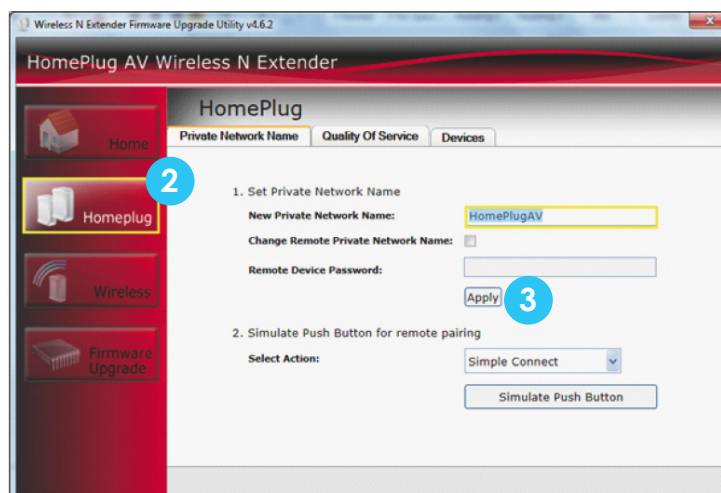
Pairing the Devices through the HomePlug Utility :

Please install the HomePlug AV Utility found on the Resource CD. You may also download the HomePlug AV Utility of your HomePlug on the Aztech Support Website (www.aztech.com/support).

Option 1 : Confirming the Private Network Name

By default, your HomePlug will automatically pair with other HomePlugAV devices using their default Private Network Name, **HomePlugAV**. You may do the step below to confirm that the default private network name is utilized by your HL110EW.

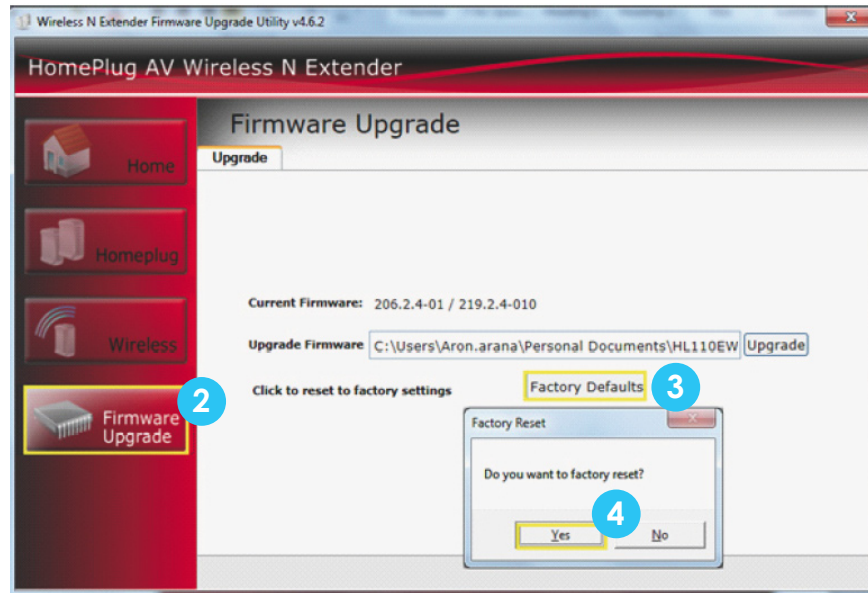
1. On your Desktop/PC launch the **HomePlugAV Utility**.
2. Click the **HomePlug** menu.
3. Click the **Apply** button. This is to re-apply the Default Private Network name set on your HomePlug device.



Option 2 : Perform Factory Default Reset

Since all Aztech HomePlug AV devices are plug and play ready, performing a factory default reset will immediately revert the set private network name to its default setting : **HomePlugAV**. This would then automatically pair your HomePlug AV device to all HomePlug devices using the default private network name.

1. Launch the HomePlug AV Utility.
2. Click the **Firmware Upgrade** menu.
3. Click the **Factory Defaults** button and click **Yes** when prompted to confirm.



Your device would revert to its default settings, and would AUTOMATICALLY pair with your HomePlug devices.

For other Guides or FAQs, please visit our Aztech Support Website using this [LINK](#).